



江苏维达机械有限公司
JIANGSU VICTOR MACHINERY CO., LTD.

江苏省张家港市塘桥镇华芳南路1号
No. 1 Huafang South Road, Tangqiao, Zhangjiagang,
Jiangsu Province, 215611, China

内销 Domestic sales: +86 512 58921256
外销 Overseas sales: +86 512 58921221
传真 Fax: +86 512 58432128
Email: info@victorm.com sales@victorc.com

www.victorm.com
www.victorc.com
www.victormold.com

VICTOR

三工位注吹中空成型机

THREE STATION INJECTION BLOW
MOLDING MACHINE





VICTOR

60/30 > 2

60年匠心, 30年注吹, 岂止快2秒

60 years dedication of manufacturing
30 years focus on injection blow
more than 2 seconds faster

CONTENT

目录

惟有匠心·与你同达 Victor the path to success	01
实力维达 Victor	03
您的注吹行业顾问 Your consultant in the injection blow molding industry	05
数字化系统助力快速响应 The digital system provides support for rapid response	06
智能制造保障高质量交付 Intelligent manufacturing ensures high-quality delivery	07



注吹机简介 I.B.M features	09
标准机 Standard machinery	11
混电机 Hybrid machinery	13
全电机 All electric machinery	15
D系列 大瓶行业专机 Efficient D series for big containers	17



创新模具, 助力更高的流程效率 Innovative mold, drive greater process efficiency	19
注吹模 I.B.M. moulds	21
注塑模 Injection moulds	22
自动化、智能化的注吹解决方案 Automatic solution	23
周边设备 Auxiliary equipment	24
周全服务, 每个环节提供支持 Service	25

VICTOR THE PATH TO SUCCESS

维有匠心·与你同达

我们始终坚持以客户为中心,秉持真心,时刻关注客户的需求。
以强大的技术力量团队,根据不同客户的具体要求提供切实可行的技术方案,
为客户提供满意的产品。

We are a customer orientated company with a powerful designed technical team providing quality and innovative products that meet the specific demands of our clients. It is the company's mission to assure our customer's satisfaction.





VICTOR

实力维达

江苏维达机械有限公司创立于1958年，是一家集研发、生产、销售于一体的科技创新型企业，致力于为全球客户提供高品质定制化的塑料机械解决方案。公司位于江苏省张家港市高新区，交通便利，产品畅销全球50多个国家和地区。

公司主营产品包括注吹中空成型机、精密模具、挤出压延生产线等，产品广泛应用于医疗健康、食品日化包装、环保过滤、5G通信等行业，在各细分领域均占市场领先地位。作为国家级专精特新“小巨人”企业、高新技术企业，维达机械是注吹中空成型机多项国家标准、行业标准的主要起草单位。

公司注重技术创新和研发投入，围绕高效节能，潜心打造绿色、安全、智能的装备，利用云平台和物联网技术，满足客户数字化服务需求。公司拥有先进的精密加工设备和自动柔性生产线，通过建设5G数字工厂，实现订单全流程透明化管理。

维达机械始终以科技创新为驱动力，不断探索智能制造和数字化转型的深度与广度，秉承让客户放心、给员工幸福的经营理念，与全球合作伙伴携手塑造更高效、更可持续的产业未来。

VICTOR MACHINERY, founded in 1958, located in Zhangjiagang, is a tech-innovating firm integrating R&D, production, and sales. We provide high-quality customized plastic machinery turn-key solution. Its products have gained wide acceptance and are distributed across more than 50 countries and regions globally.

The company's main products include injection blow molding machine, precision mold, and extrusion production line, applied in medical and health, food and daily chemical packaging, environmental protection filtration, and 5G communication, holding market-leading positions. As a national "Little Giant" and high-tech enterprise, Victor Machinery is a key drafter of many national and industry standards for IBM machines.

Emphasizing innovation and R&D, Victor Machinery focuses on energy-efficient and green equipment. It uses cloud and IOT tech to serve customers digitally. Equipped with advanced processing tools and automated lines, its 5G digital factory ensures clear order management.

Innovation-driven, Victor Machinery pursues intelligent manufacturing and digital change. With a customer-centric and employee-friendly philosophy, it partners globally for a more efficient and sustainable industry future.

65+

励精图治65余载春秋，已成为领先的塑料包装加工设备供应商
Have become one leading manufacturer of plastic machines for packing industrial with 65 years of good management

60,000+

维达65余年为客户提供超过60000套塑机设备及整体解决方案
Provide more than 60,000 turn-key solutions for plastic machinery in 65 years

120

拥有先进加工设备120余台，满足高精密的设备及模具加工要求
With more than 120 sets of advanced processing equipment, meet the high-precision equipment and tooling requirements

2"

MSZ高速机系列开创性技术改进，比上一代机型又快2秒
With groundbreaking technical improvements, MSZ serial high speed machine is 2 seconds faster than the previous generation.

6

先后通过了ISO 9001, ISO 45001:2018, ISO 14001:2015质量体系认证、欧洲CE安全认证、美国UL认证、加拿大CSA认证
Pass ISO9001, ISO45001:2018, ISO14001:2015 quality control system, get CE safety certification, UL certification and CSA certification

60+

拥有60多项发明专利和知识产权
Own more than 60 invention patents and proprietary intellectual property rights

50+

产品远销美国、土耳其、墨西哥、印度等50多个国家和地区
Products are well sold more than 50 countries, such as United States, Turkey, Mexico, India

100

地处以上海为经济中心的100公里经济辐射圈之张家港
Located in Suzhou, only 100km to Shanghai city



YOUR CONSULTANT IN THE INJECTION BLOW MOLDING INDUSTRY

您的注吹行业顾问

拥有机器研发、模具设计、成型工艺协同开发体系,为客户提供有竞争力的差异化的整套解决方案,引领注吹行业变革。

With machine research and development, mold design, forming process collaborative development system, to provide customers with a competitive and differentiated set of solutions, leading the injection-blowing industry change

卓越设备研发

Plastic machine R&D

从客户需求分析到产品验证的全流程研发能力,结合三维设计、有限元分析及仿真技术,并通过融合AI技术,实现高效、精准的产品开发与验证。

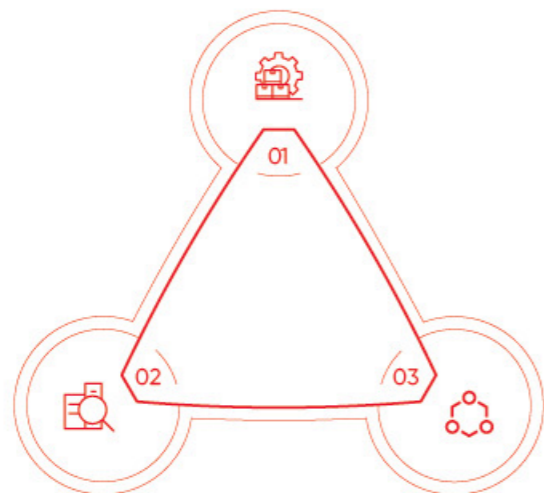
The full-process R&D capability from customer demand analysis to product verification, combined with three-dimensional design, finite element analysis, and simulation technology, enables efficient and precise product development and verification.

先进模具设计

Mould R&D

融合产品设计、模具结构协同开发,实现高精度成型、多原料适配以及瓶盖配套整体解决方案。

Integrated product design, mold structure collaborative development, to achieve high-precision molding, multi-raw material adaptation and bottle cap matching overall solution.



独到工艺水平

Unique Process Technological

以庞大的试模参数数据库为核心,提供完整的注吹生产工艺,保障客户实际稳定生产,并助力效率改进。

With a huge test mold parameter data base as the core, to provide complete injection and blowing production process, to ensure customers' actual stable production, and help improve efficiency.



THE DIGITAL SYSTEM PROVIDES SUPPORT FOR RAPID RESPONSE

数字化系统助力快速响应



客户管理系统

Customer Management system

以客户为中心构建CRM系统,集中管理客户信息,实现数据共享,优化客户体验,提升客户满意度。

Build a CRM system centered around customers, centrally manage customer information, achieve data sharing, optimize the customer experience, and enhance customer satisfaction.



数字化生产管理系统

Digital Production Management System

通过实时的动态数据,优化生产流程,精准管控计划,提升调度精度与效率,实现产品质量和交期的全过程追溯,让客户放心。

Optimize the production process through real-time dynamic data, precisely manage and control production plans, enhance the accuracy and efficiency of scheduling, and achieve full-process traceability of product quality and delivery dates, thus reassuring customers



智能设计系统

Smart Design System

采用标准化数据库、参数化设计、工艺协同及3D仿真,助力高效创新,快速响应客户需求,设计效率提升40%,精准衔接生产,实现无偏差制造。

Adopting a standardized database, parametric design, process collaboration and 3D simulation, it drives efficient innovation, responds rapidly to customer needs, boosts design efficiency by 40% and precisely links to production for deviation-free manufacturing.



智能仓储系统

Intelligent Warehousing System

基于立体仓库与AGV实现生产物资的出入库、捡选、回流、配送等过程自动化,并通过物料分类编码与电子标签实现精准追踪,动态调控库存,保障物资供应。

Based on the stereoscopic warehouse and AGV, we automate material in/outbound, picking, returns, and distribution. Material coding and e-tags enable precise tracking, dynamic inventory control, and reliable material supply.



INTELLIGENT MANUFACTURING ENSURES HIGH-QUALITY DELIVERY

智能制造保障高质量交付

柔性生产线依托数字化流程实现智能跃迁，通过物联网实时采集生产数据，AI算法动态优化排产方案，模块化设备集群可快速重组工艺路径，推动生产制造向高效、敏捷、可持续方向转型升级。

The flexible production line makes an intelligent leap via digital processes. It collects real-time production data through IoT, uses AI algorithms to optimize production scheduling dynamically, and allows modular equipment clusters to quickly reorganize process routes. This drives the transformation of manufacturing towards efficiency, agility, and sustainability.



精益流程 Lean Process

以数字化技术融合精益管理，实时采集分析设备状态、生产进度及物料数据，实现全流程透明化管控。通过动态调整生产计划与资源配置，全面提升运营效率与效益。

Integrating digital tech with lean management, we collect/analyze real-time data on equipment, production, and materials for full-process transparency. Dynamic plan/resource adjustments boost operational efficiency and effectiveness.



整合生产 Integrated Production

通过5G专网使智能化生产装备与信息化系统无缝集成，实现业务流程信息化、加工单元柔性化、检测单元自动化，全面提升生产效率、产品质量、市场响应速度。

Via 5G private network, intelligent production gear and info system integrate seamlessly. This enables business process digitization, flexible processing units, automated inspection units, and boosts production efficiency, product quality, and market-response speed.

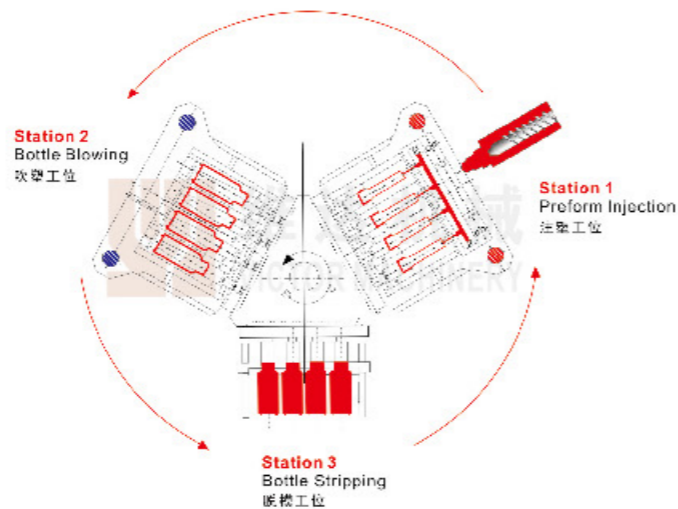


智能检测 Intelligent Detection

采用智能检测装备，通过设备自检、芯片追溯等技术实现全流程质量监控，实时上传分析数据并反馈整改，异常批次即时报警，隔离追溯，持续提升产品一致性。

Adopting intelligent inspection equipment, we use self-check and chip-traceability to monitor quality across the process. Data is uploaded and analyzed in real-time for feedback. Alarms go off for abnormal batches, which are isolated and traced to boost product consistency.

1ML-2L
PP
PE
PS
COC
PEEK
TPU
...



注吹工作原理 I.B.M Principle

I.B.M FEATURES

注吹机

塑料注吹中空成型机，是采用精确的旋转式三工位设计，瓶胚注塑完成后旋转至吹瓶工位，再送至脱瓶工位，制品可以直接包装或送入输送带进入下一道工序。经过一步法做出的瓶子因口部是注射成型，瓶口平整，尺寸精准；瓶身与瓶底也因模具的精确设计，壁厚均匀，无飞边及边角料，适合1ml-2L、PE、PP、PS、SAN、EVA、COC、PEEK、TPU、PETG、PLA等热塑性原料的吹塑成型。能满足高层次的医药、化工、日化、食品等行业的包装需求，是高效率包装制造的专业设备。

Injection Blow Molding Machine adopts an accurate rotary three-station design. Once the preform injection is done, it rotates to the blowing station and then to the demolding station. Finished products can be directly packaged or conveyed for the next step. It's suitable for PE, PP, PS, SAN, EVA, COC, PEEK, TPU, PETG, PLA etc material, bottles volume various from 1ml-2L. The I.B.M bottle has a perfect neck finish and uniform body thickness, without flash and scrap materials. It can meet the packaging needs of high-level industries such as pharmaceuticals, chemicals, daily chemicals, and food, and is a professional equipment for high-efficiency packaging manufacturing.



STABILITY

稳定

Hydraulic
液压



高效节能
High Efficiency
High Output



绿色节能
Green
Energy Saving



可靠安全
Reliable
Safe



开放兼容
Open
Compatible



STANDARD MACHINERY

标准机

注吹中空成型机

INJECTION BLOW MOLDING MACHINE

以卓越的市场表现和稳定性著称，全球已有超过4000台设备稳定运行。凭借成熟可靠的工艺和广泛的市场验证，标准机成为高效稳定生产的理想选择，为客户提供经得起时间考验的生产解决方案。

It is renowned for its outstanding market performance and stability, there is more than 4,000 sets of machine operating stably worldwide. With mature technology and wide market validation, the standard IBM machine is ideal for efficient, stable production, offering time - tested solutions.

技术优势 Technology Advantages

- > 独有专利同步开合模和升降机构，空循环周期仅2秒
- > 优化能耗系统，降低设备碳排放率
- > 灵活压力中心分布，适应多种容器成型
- > 开放式集成功能，支持与周边设备高效互联
- > Unique patented synchronous mold open/close and table lifting mechanism, dry cycle only 2s.
- > Optimize the energy consumption system and reduce the carbon emission rate of the equipment.
- > Flexible distribution of the pressure center to adapt producing various bottles.
- > Open integrated function, supporting efficient interconnection with peripheral devices.

典型案例 Classic Case

100ml 药瓶 Tablet Container

机型	Model	MSZ 30	MSZ 50S	MSZ 70S	MSZ 95S	MSZ 135S
腔数	Cavity	5	8	11	13	18

口径	Neck Diameter	E	34mm
直径	Body Diameter	BD	47mm
总高	Height	H	78mm
重量	Weight		16g



ENERGY-SAVING

节能

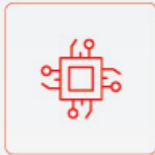
Hybrid
混电



高效节能
High Efficiency
Energy Saving



绿色环保
Environmental
Protection



智能操控
Intelligent
Control



环境友好
Friendly
Environment



HYBRID MACHINERY

混电机

注吹中空成型机

INJECTION BLOW MOLDING MACHINE

以节能与低噪音为核心优势，采用伺服电机替代传统液压执行件，实现能源高效利用，同时显著降低运行噪音。混电机不仅满足环保需求，更为客户带来舒适、可持续的生产体验，是兼顾效率与环保的优选设备。

Boasting energy efficiency and low noise, it replaces traditional hydraulic actuators with servo motors for better energy use and much less noise. The hybrid machine meets the needs of environmental protection and offers a comfortable, sustainable production experience. It's an ideal choice balancing efficiency and environmental protection.

技术优势 Technology Advantages

- > 分割器电回转系统，提升回转精度
- > 伺服电机、滚珠丝杆系统，速度更快、精度更高
- > 电动预塑装置，提升塑化速度与质量，节能显著
- > 直线导轨支撑，低摩擦、小惯性，注射精度高
- > The electric rotation system of the divider improves the rotation accuracy.
- > The servo motor and ball screw system enable faster speed and higher precision.
- > The electric charging device improves the plasticizing speed and quality, and has remarkable energy-saving effects.
- > Supported by linear guide rails, it features low friction, small inertia and high injection precision.

典型案例 Classic Case

MSZ50S-HE比MSZ50S节能**14%**左右，生产1000kg制品省电**80度**。

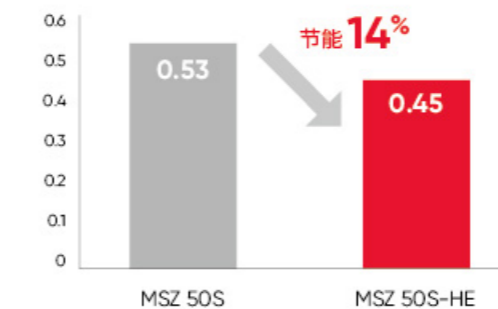
节能原因：电预塑、电脱、电翻、电回转

The MSZ50S-HE is about **14%** more energy - efficient than the MSZ50S.

Producing 1000 kg of products saves **80 kWh** of electricity.

Reasons for energy efficiency: Electric charging, Electric stripping, Electric rotation

千克能耗 (kW.h/kg)



模具编号	Mold number	16378
腔数	Number of cavities	5
单腔克重	Weight	23.6g
制品容积	Product volume	200ml
测试原料	Test material	HDPE 5502

PRECISION

精准

All Electric
全电



洁净安全
Clean
Safe

精密控制
Precise
Control

精准适配
Accurate
Adaptation

智能校准
Intelligent
Calibration



ALL ELECTRIC MACHINERY

全电机

注吹中空成型机

INJECTION BLOW MOLDING MACHINE

集节能、低噪音、高精度与智能化于一体，为客户提供清洁高效的生产环境。通过智能化操作与高精度控制，全电机能够满足严苛的工艺需求，是追求极致性能与未来化生产的行业标杆。

Integrating energy conservation, low noise, high precision and intelligence, it provides customers with a clean and efficient production environment. Through intelligent operation and high-precision control, the all-electric machine can meet strict process requirements, and it is an industry benchmark for those who pursue ultimate performance and futuristic production.

技术优势 Technology Advantages

- > 全电配置，更好的满足洁净车间需求
- > 伺服电机与滚珠丝杆开合模，速度快、精度高、更强的制品适应能力
- > 三板四导柱直线导轨射台，注射及预塑闭环控制，产品一致性佳
- > 优化修正算法，动作定位精准，稳定快速。
- > All-electric configuration can better meet the requirements of a clean workshop.
- > The servo motor and ball screw are used for mold opening and closing, high speed, high precision, stronger adaptability to various products.
- > The injection unit is equipped with a three - plate and four - guide - pillar linear guide rail. Closed - loop control is applied to injection and charging, ensuring excellent product consistency.
- > The optimized correction algorithm enables precise positioning of actions, with stability and high speed.

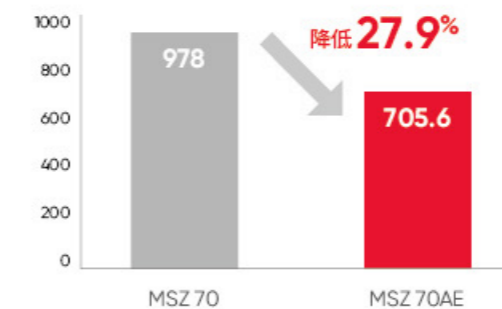
典型案例 Classic Case

150ml HDPE 圆瓶 Round Bottle

		MSZ 70	MSZ 70AE
模腔数	Cavity	9	9
单腔重量	Weight	21g	21g
周期	Cycle time	16.4s	14s
产量	Output	1975pcs/h	2314pcs/h

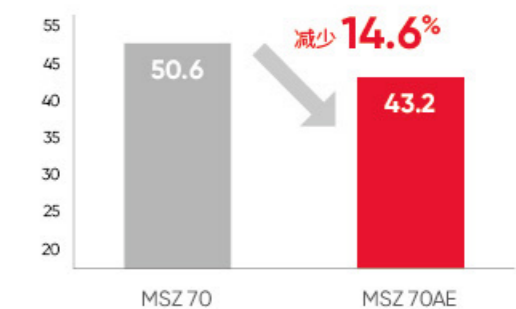
10万件制品能耗 (kWh)

Energy consumption of 100,000 bottles



10万件制品耗时 (h)

Time consuming of 100,000 bottles



CUSTOMIZATION

定制

For Large Bottles
大瓶专用



行业定制 Industry Customization	灵活适配 Flexible Adaptation	智控可调 Intelligent Control Adjustable	专属体验 Exclusive Experience
-----------------------------------	--------------------------------	---	---------------------------------



EFFICIENT D SERIES FOR BIG CONTAINERS

D系列 大瓶行业专机

注吹中空成型机

INJECTION BLOW MOLDING MACHINE

D系列是为大瓶制品设计的行业专机，配备超大容模空间与特殊合模系统，确保充足的锁模力。支持电脱模、电翻转、电回转、电预塑等多种功能选配，灵活适应多样化行业需求，为定制化生产提供全面解决方案。

The D series is an industry-exclusive machine for large-bottle products. With an extra-large mold space and a special clamping system, it ensures ample clamping force. It offers optional functions like electric stripping, electric rotation and electric charging, flexibly meeting various industry needs and providing comprehensive customized production solutions.

技术优势 Technology Advantages

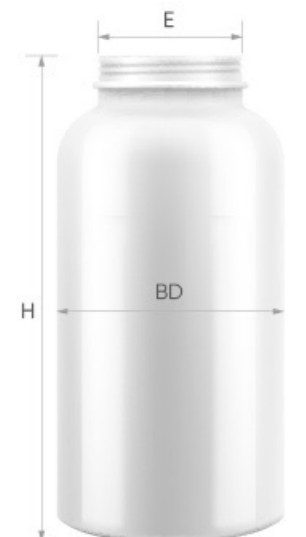
- 增压辅助系统，锁模力均匀分布
 - 三角梁锁模机构，保证合模部件稳定性
 - 压力中心偏置技术，提供更大容模空间
 - 模块化设计，支持各部件灵活升级
- The pressure boosting auxiliary system ensures uniform distribution of the clamping force.
 - The triangular beam clamping mechanism guarantees the stability of the mold closing components.
 - The technology of offsetting the pressure center provides a larger mold accommodation space.
 - The modular design supports flexible upgrading of each component.

典型案例 Classic Case

1L 农药瓶 Pesticide bottle

机型	Model	D7-Pro	D9-Pro	D13-Pro
腔数	Cavity	4	6	8
周期	Cycle Time	24±1s	25±1s	26±1s
日产量	Daily Output	14400pcs/24hours	20409pcs/24hours	26584pcs/24hours

口径	Neck Diameter	E	60mm
直径	Body Diameter	BD	88mm
总高	Height	H	223.8mm
重量	Weight		82g





INNOVATIVE MOLD DRIVE GREATER PROCESS EFFICIENCY

创新模具
助力更高的流程效率



个性化定制服务
Personalized Customization

从产品设计到模具制造，为客户提供一站式服务，满足市场多样化的需求。

Offer one-stop services for customers from product design to mold manufacturing, meeting the diverse market demands.



优质材料选择
High-quality Material

选用高性能模具钢及新型复合材料，提高模具的耐磨性、耐腐蚀性和热稳定性，延长使用寿命。

Select high-performance mold steels and new composite materials to enhance the mold's wear resistance, corrosion resistance, and thermal stability, thereby extending its service life.



高精度加工能力
High-precision Machining Capability

先进的加工设备和精湛的加工工艺，提升模具精密度。

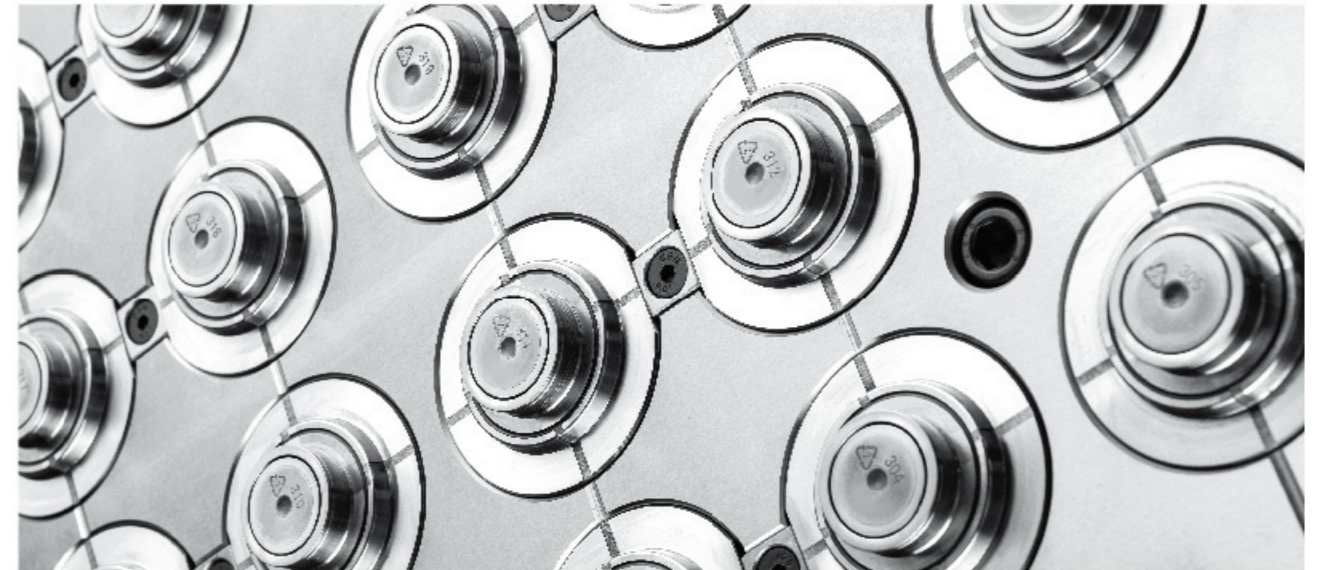
With advanced processing equipment and excellent machining techniques, improve the precision of molds.

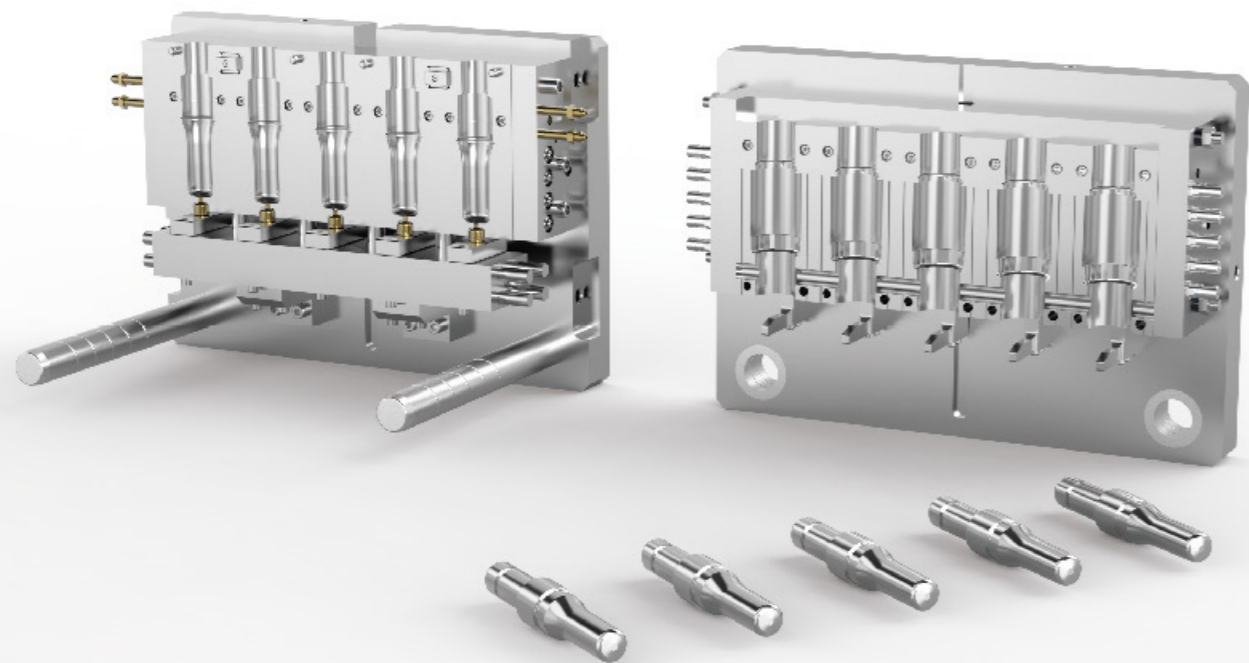


先进设计理念
Advanced Design Concepts

利用数字化、智能化设计体系，优化模具结构，提升设计效率。

Utilize digital and intelligent design systems to optimize the mold structure and enhance design efficiency.





I.B.M MOULDS

注吹模

应用于MSZ型设备, 和各种欧美机型
Moulds are suitable for MSZ serial machine, also special designed for Jomar & Uniloy machines.



医药 Pharmacy



化工 Chemical



日化 Cosmetic



食品 Food



普通盖 Plastic Caps



翻盖 Flip Top Caps



医药耗材 Pharm Consumables

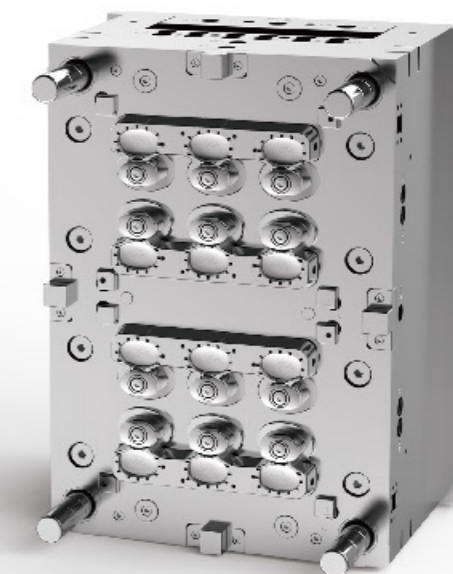
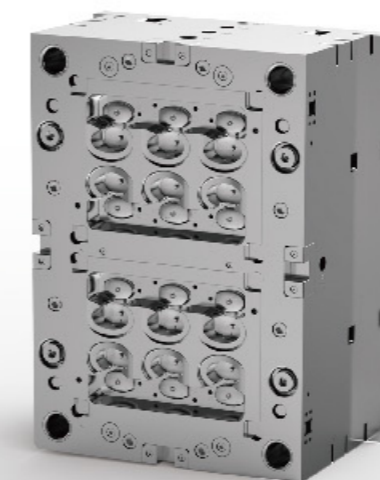


其它包材 Other Closures

INJECTION MOULDS

注塑模

我们能为您设计和制作各种包装用注塑模具, 实现与瓶子的精确配合。
We can supply kinds of injection moulds for paking industrial products, reach a precise fitment with bottles.





AUXILIARY EQUIPMENT 周边设备



模温机
Mold Temperature Controller



冷水机
Chiller



空压机
Air Compressor



自动上料机
Auto Loader



视觉检测机
Visual Inspection



色母混料机
Color Mixer



在线测漏
Leaking Tester



在线打包
Bagging Machine



模内贴标机
In-mold Labeling Machine

设备的安装调试至合格验收由经验丰富的资深工程师负责,直至设备能正常进入生产状态。

Our experienced senior engineers will be responsible not only for equipment installation but also successful and stable production status and overall training.

除正常的安装现场技术培训外,我们可为用户提供一对一的机器操作,模具工艺,维修保养等专题培训。

In addition to normal installation technical training, we provide personal training to help users understand machine operation, mould process, maintenance, etc.

我们会对售出产品进行定期回访,提醒客户进行预防性检修维护,以降低机器磨损,节省维修及更换零件的费用。

To avoid machine wear out and save maintenance cost, we have regular reminder service to advise preventive maintenance of machine and molds.



我们常备充足的设备零部件库存,能缩短客户机器停机时间,减少因交货期延误造成的损失。

We always maintain an adequate inventory of equipment parts, which can shorten the downtime of our customers' equipment and reduce the losses caused by delivery delays.

只要您的设备出现紧急状况,请立即拨打我们的售后服务热线。我们的服务热线全天候24×7为您服务。

Our service hotline is available all day, 24/7. As long as your equipment has an emergency, pls contact us.

TECHNICAL PARAMETERS

技术参数

注射机构	Preform system	Unit	MSZ 30		MSZ 30HE		MSZ 30AE		Q3	MSZ50H		MSZ 50S		MSZ50S-HE		MSZ 50AE		MSZ 70		MSZ 70S		MSZ 70S-HE		MSZ 70AE		D7		D7-Pro		MSZ 95S		MSZ95S-HE		D9		D9-Pro		MSZ 135		MSZ 135HE		D13-Pro					
螺杆直径	Screw diameter	mm	40	45	40	45	40	45	28	45	50	45	50	45	50	45	50	50	55	50	55	50	55	50	55	50	55	50	55	60	65	60	65	60	65	60	65	70	75	70	75	70	75				
螺杆长径比	Screw L/D	L/D	23:1	23:1	23:1	23:1	23:1	23:1	23:1	23:1	23:1	23:1	23:1	23:1	23:1	23:1	23:1	23:1	23:1	23:1	23:1	23:1	23:1	23:1	23:1	23:1	23:1	23:1	23:1	23:1	23:1	23:1	23:1	23:1	23:1	23:1	23:1	23:1	23:1	23:1	23:1	23:1	23:1				
最大注射容积	Shot volume	cm ³	200	254	200	254	200	254	67.7	318	392	318	392	318	392	318	392	392	475	392	475	392	475	392	475	392	475	392	475	392	475	715	839	715	839	715	839	715	839	1077	1236	1077	1236	1077	1236		
最大注射量	Injection weight(HDPE)	g	190	241	190	241	190	241	64	301	372	301	372	301	372	301	372	372	450	372	450	372	450	372	450	372	450	372	450	677	795	677	795	677	795	677	795	677	795	1020	1170	1020	1170	1020	1170		
螺杆转速	Max.Screw speed	rpm	10-225		10-225		10-235		10-300	10-235		10-235		10-235		10-235		10-235		10-235		10-235		10-235		10-235		10-235		10-235		10-235		10-250		10-250		10-235		10-235		10-235					
机筒加热功率	Heating capacity	KW	9.6		9.6		9.6		4	11.5(1.76*6+0.9)		11.5		11.5		11.5		10.8		14		14		14		14		14		14		14		14		14		14		14		18.8		18.8		18.8	
电热控制区	No.of heating zone	Qty	3+N		3+N		3+N		5+N	3+N		3+N		3+N		3+N		3+N		3+N		3+N		3+N		3+N		3+N		3+N		3+N		3+N		3+N		3+N		3+N		3+N		3+N		3+N	
合模系统	Clamping system																																														
注塑锁模力	Clamping force of preform	KN	323.2		323.2		350		350	504		528		528		528		742		712		712		712		1000		1000		1008		1008		1500		1500		1344		1344		2000					
吹塑锁模力	Clamping force of blowing	KN	46.7		46.7		53.7		100	89		93.4		93.4		109		89		107.7		107.7		107.7		107.7		107.7		107.7		221		221		221		221		235		235		345			
开合模行程	Opening stroke of mold platen	mm	120		120		165		160	130		165		165		165		140		165		165		165		185		185		185		185		185		185		185		185		245					
塔台提升高度	Lifting H of rotary table	mm	65		65		80		80	70		80		80		80		70		80		80		80		90		90		90		90		90		90		90		90		120					
最大模板尺寸	Max.Platen size(L×W)	mm	400×270		400×270		400×270		400×270	560×390		560×390		560×390		560×390		800×390		800×390		800×390		800×390		860×440		860×440		900×480		900×480		960×510		960×510		1400×500		1400×500		1400×600					
最小模具厚度	Min.mold thickness(H)	mm	180		180		180		130	240		240		240		240		280		280		280		280		280		280		280		280		280		280		280		280		320					
模具加热功率	Heating capacity of mould	KW	3		3		3		3	3.6		3.6		3.6		3.6		6		6		6		6		6		6		6		6		6		6		6		6		6					
脱模系统	Stripping system																																														
脱模行程	Stripping stroke	mm	220		220		220		220	270		270		270		270		240		295		295		295		295		300		295		300		295		300		260		300		300					
空运转时间	Dry cycle	sec	3		3		3		1.8	3.5		2		2		2		3.5		2.1		2.7		2.7		2.7		2.7		3		3		3		3		3		3		4.5					
驱动系统	Driving system																																														
驱动电机	Motor power	KW	13.9		13.9		9.8		38.4	19		19		19		9.8		31		31		31		9.8		23.1+31.7		23.1+31.7		24+24+10		23.1+31.7		23.1+31.7		23.1+31.7		31.7+31.7+23.1		23.1+31.7		23.1+42.2					
系统压力	Hydraulic pressure	Mpa	14		14		14		14	14		14		14		14		14		14		14		14		14/22		14/22		14		14		14/22		14/22		14/22		14/22		14/22					
制品尺寸范围	Product range																																														
制品容积	Suitable bottle range	ml	5-800		5-800		5-800		5-100	5-800		5-800		5-800		5-800		5-800		5-800		5-800		5-800		5-800		5-800		5-800		5-800		5-800		5-800		5-800		5-800		5-800					
制品高度	Max.bottle height	mm	≤190		≤190		≤190		≤88	≤200		≤200		≤200		≤200		≤200		≤200		≤200		≤200		≤200		≤200		≤200		≤200		≤200		≤200		≤200		≤200		≤200					
制品直径	Max.Dia.of bottle	mm	≤100		≤100		≤100		≤36	≤100		≤100		≤100		≤100		≤100		≤100		≤100		≤100		≤100		≤100		≤100		≤100		≤100		≤100		≤100		≤100		≤100					
其它	Other																																														
压缩空气压力	Min.air pressure	Mpa	1		1		1		1	1		1		1		1		1		1		1		1		1		1		1		1		1		1		1		1		1					
压缩空气排量	Discharge rate of compressed air	m ³ /mm	≥0.8		≥0.8		≥0.8		≥0.8	≥0.8		≥0.8		≥0.8		≥0.8		≥0.8		≥0.8		≥0.8		≥0.8		≥0.8		≥0.8		≥1		≥1		≥1		≥1		≥1.2		≥1.2		≥1.2					
冷却水流量	Water flowage	m ³ /h	3		3		3		3	4		4		4		5		5		5		5		5		5		5		6		6		6		6		6		6							
额定总功率(含模具加热)	Total rated power with mold heating	KW	26.5		51.7		71.5		45.4	34.1		34.1		63.75		95.65		47.8		51		80.65		96.55		74.8		113.1		84		102.75		80.8		151		114.6		144.15		160.25					
实际使用功率	Actual power consumption	KW	10-18		10-18		10-18		8-15	15-23		15-23		15-23		15-23		20-28		20-28		20-28		20-28		20-28		20-28		25-35		25-35		25-35		25-35		25-35		25-35		28-38					
推荐使用总开关	Recommended main switch	A	100		100		100		100	125		125		125		125		160		160		160		160		160		160		250		250		250		250		250		250							
推荐线径	Recommended wire diameter	mm ²	16		16		16		16	25		25		25		25		25		25		25		25		25		25		35		35		35		35		35		35							
设备尺寸	Dimension(L×W×H)	M	3.56×1.25×2.25		3.56×1.25×2.25		3.83×1.53×2.38		3.08×1.49×2	4.11×1.57×2.5		4.11×1.57×2.5		4.36×1.57×2.5		4.8×1.75×2.6		4.1×1.78×2.6		4.39×1.91×2.54		4.64×1.91×2.54		5.1×2×2.6		5.1×2×2.6		5.1×2×2.6		5.0×2.0×2.6		5.3×2.1×2.6		5.3×2.1×2.6		5.3×2.1×2.6		6.0×2.5×2.6		6.0×2.5×2.6		6.0×2.5×2.6					
设备净重	Net weight	ton	4		4		8.4		4	7		7.8		8		7.4		9		9		9		10		12.8		12.8		12		12		15		15		17		17		19					

技术参数可能在未预告的情况下进行规格变更,恕不另行通知。该目录中产品的颜色由于印刷原因,内容可能与实际产品不符,请以实际产品为准。
Specifications of the products may be changed without forenotice. Colour of the items listed may be different from actual specification due to printing, please refer to actual color.



65+

励精图治65余载春秋，已成为领先的塑料包装加工设备供应商
Have become one leading manufacturer of plastic machines for packing industrial with 65 years of good management

60+

拥有60多项发明专利和知识产权
Own more than 60 invention patents and proprietary intellectual property rights

50+

产品远销美国、土耳其、墨西哥、印度等50多个国家和地区
Products are well sold more than 50 countries, such as United States, Turkey, Mexico, India

2"

MSZ高速机系列开创性技术改进，比上一代机型又快2秒
With groundbreaking technical improvements, MSZ serial high speed machine is 2 seconds faster than the previous generation.

6

先后通过了ISO9001, ISO45001:2018, ISO14001:2015质量体系认证、欧洲CE安全认证、美国UL认证、加拿大CSA认证
Pass ISO9001, ISO45001:2018, ISO14001:2015 quality control system, get CE safety certification, UL certification and CSA certification

LOOKING FORWARD TO HEAR FROM U.

敬候佳音 详询为盼

CONTACT

江苏维达机械有限公司
JIANGSU VICTOR MACHINERY CO., LTD.

江苏省张家港市塘桥镇华芳南路1号
No. 1 Huafang South Road, Tangqiao, Zhangjiagang,
Jiangsu Province, 215611, China

内销 Domestic sales: +86 512 58921256
外销 Overseas sales: +86 512 58921221
传真 Fax: +86 512 58432128
Email: info@victorpm.com sales@victorcn.com

www.victorpm.com
www.victorcn.com
www.victormold.com



微信公众号



企业网站

VICTOR